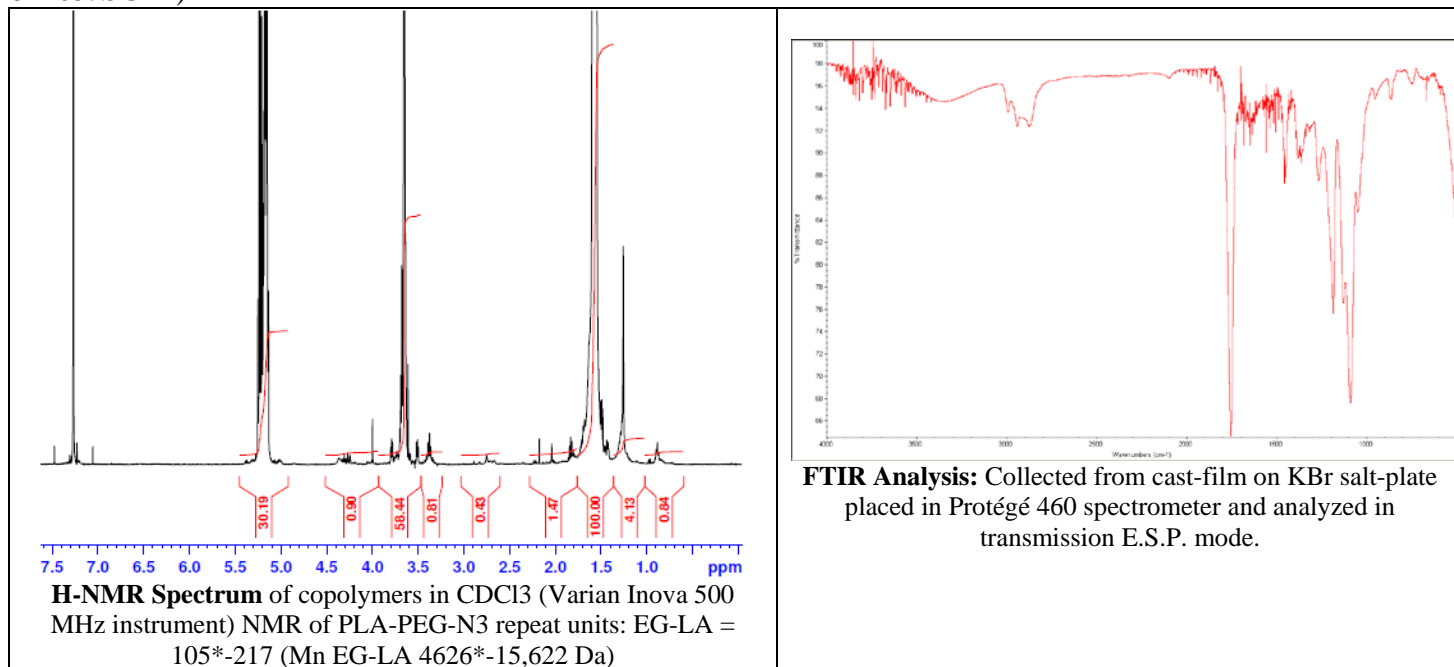


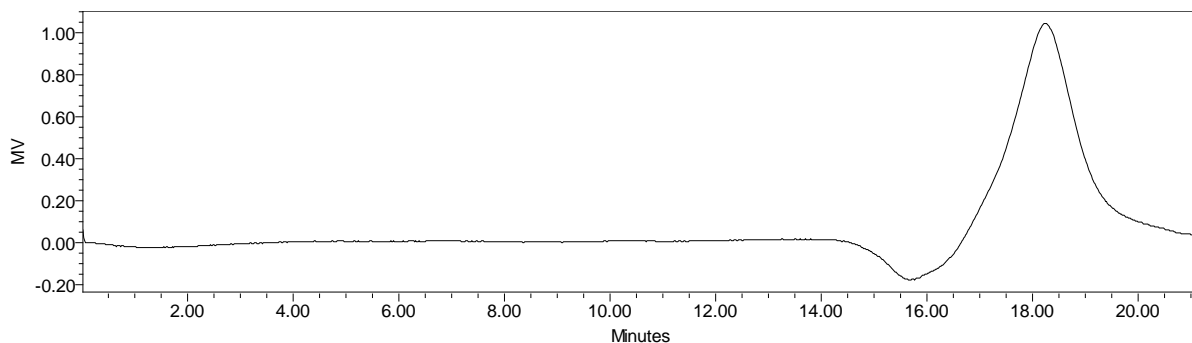
No. AI149

Certificate of Analysis

Product Name: Poly((D,L)Lactic acid)-*b*-Poly(ethylene glycol)-Azide (16,000-5,000Da) (Lot#: 61205JSG-A)



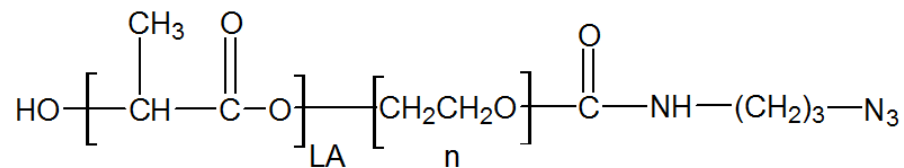
- GPC Analysis Method:** Waters Breeze 2 system with 1 ml/min DCM flow across three GPC columns (7.8 x 300 mm, mixed porosities). Detection via refractive index, calibrated against polystyrene standards.



Polymer	M _n (from GPC)	M _w (from GPC)	PDI
PDLA-PEG-Azide	23,890	28,864	1.21
PEG initiator*	Average M _w by GFC – 4600*		

*- from MFG data

- Structure of PDLA-PEG-Azide**



Material provided for research use only. Not for human use.