

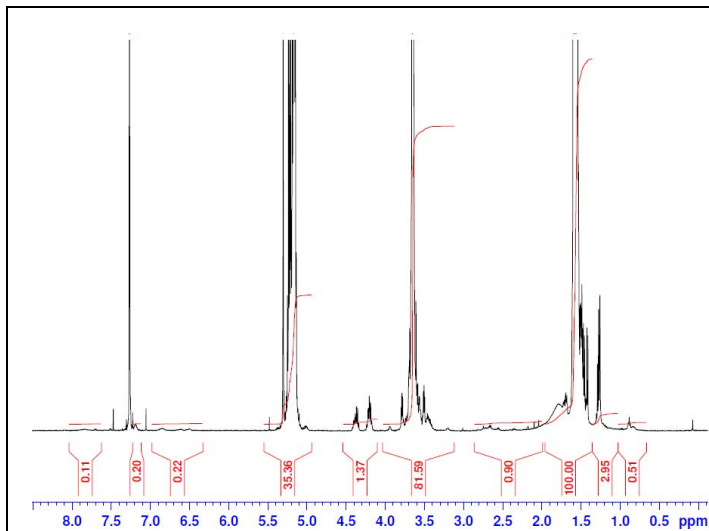
# No. AI141

# Certificate of Analysis

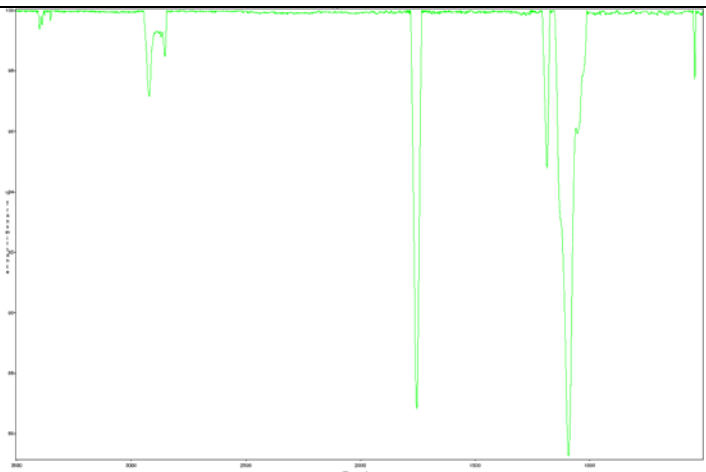
Product Name: Poly(D,L lactide)-b-Poly(ethylene glycol)-Amine copolymers (Mw ~ 15,000:3400Da) (Lot#: 60622JSG-A) (REV A: HNMR)

**H-NMR**

**FTIR**

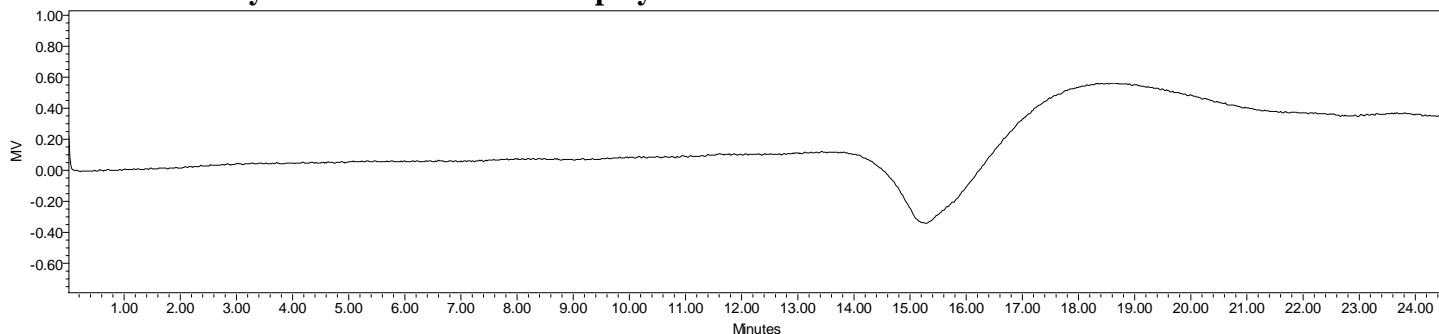


H-NMR Spectrum of PLGA-PEG-NH<sub>2</sub> copolymers in CDCl<sub>3</sub> (Varian Inova 500 MHz instrument), NMR of PLA-PEG-NH<sub>2</sub> repeat units:EG-LA = 77\*133 (M<sub>n</sub>: 3,392- 9,611 Da)



Analysis Method: Collected from cast-film on KBR salt-plate placed in Satellite FTIR (Thermo-Mattson) and analyzed in transmission mode.

- GPC analysis of PLA-PEG-NH<sub>2</sub> copolymers**

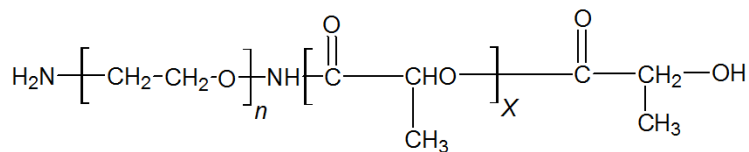


Analysis Method: Waters Breeze 2 system with 1 ml/min DCM flow across three 300x7.6 mm GPC columns (mixed porosities). Detection via refractive index, calibrated against polystyrene standards.

| Polymer                 | M <sub>n</sub> (from GPC) | M <sub>w</sub> (from GPC) | PDI  |
|-------------------------|---------------------------|---------------------------|------|
| PLA-PEG-NH <sub>2</sub> | 21,648                    | 34,646                    | 1.60 |
| PEG precursor           | Average Mw 4500*          |                           |      |

\* - Data provided by Manufacturer

- Structure of PLA-PEG-NH<sub>2</sub> copolymers**



Material provide for research use only. Not for human use.