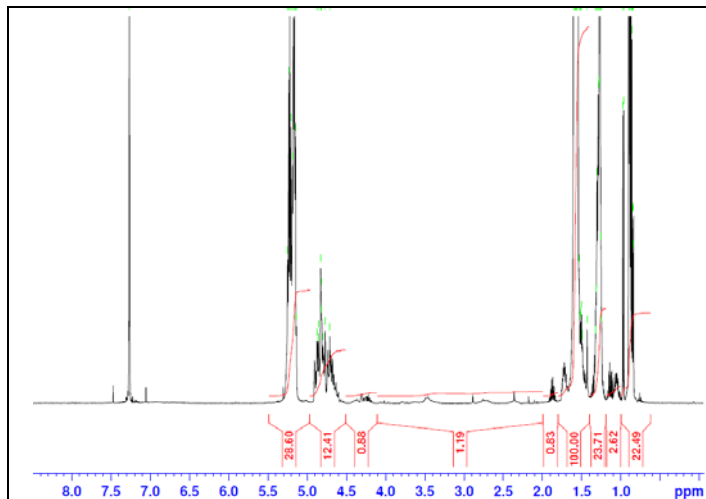


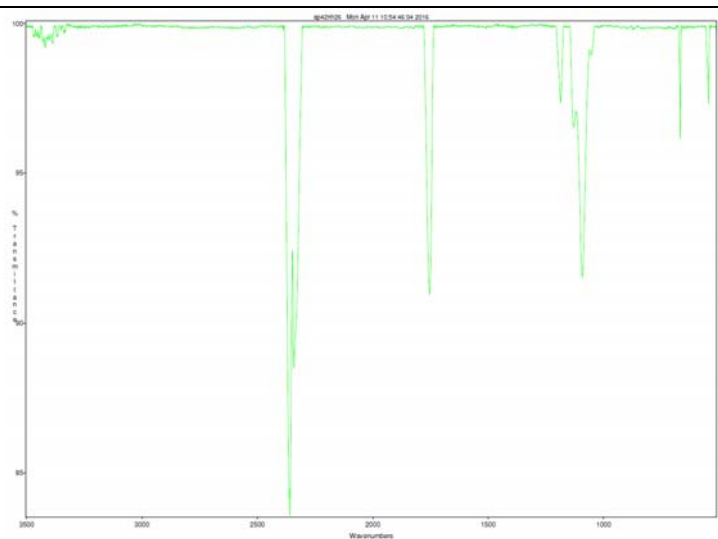
No. AI125

Certificate of Analysis

Product Name: Poly(lactide-co-glycolide) diamine endcap (Mn: 25,000-35,000 Da, LA:GA 85:15) (Lot#: 60408ELH-A)

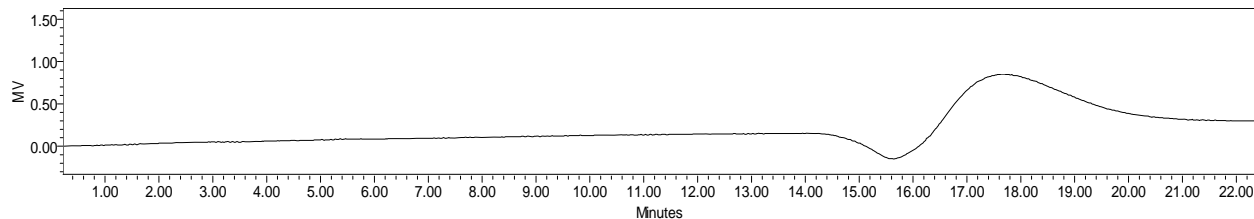


H-NMR Spectrum of PLGA-amine copolymers in CDCl₃ (Varian Inova 500 MHz instrument), NMR of PLGA-amine copolymers: LA/GA = 82%/18% molar ratio (85%/15% w/w)



FTIR Analysis: Collected from cast-film on salt-plate placed in Satellite FTIR (Thermo-Mattson) and analyzed in transmission mode.

- **GPC analysis of PLGA-NH₂ copolymers**



Analysis Method: Waters Breeze 2 system with 1 ml/min DCM flow across three Phenogel 5um columns (Phenomenex). Detection via refractive index, calibrated against polystyrene standards.

Polymer	Mn (from GPC)	Mw (from GPC)	PDI
PLGA-NH ₂	29,261	38,720	1.32

- **Structure of PLGA-NH₂ copolymers**

