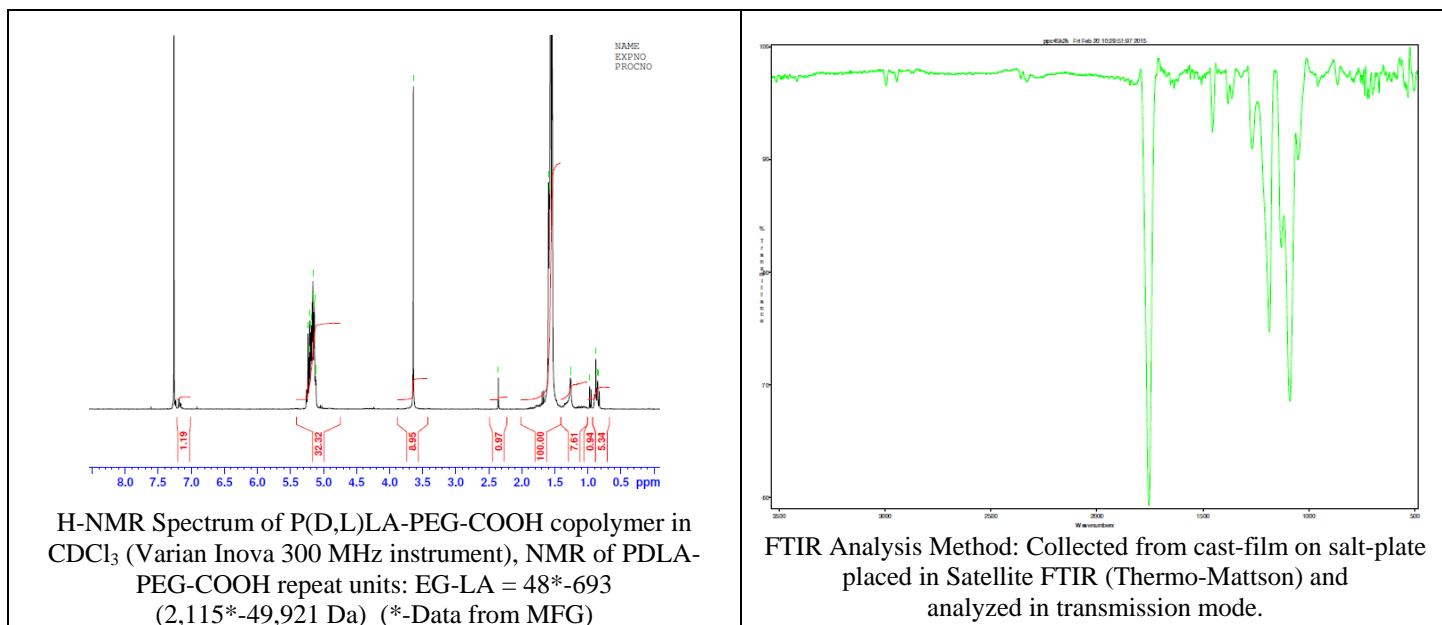
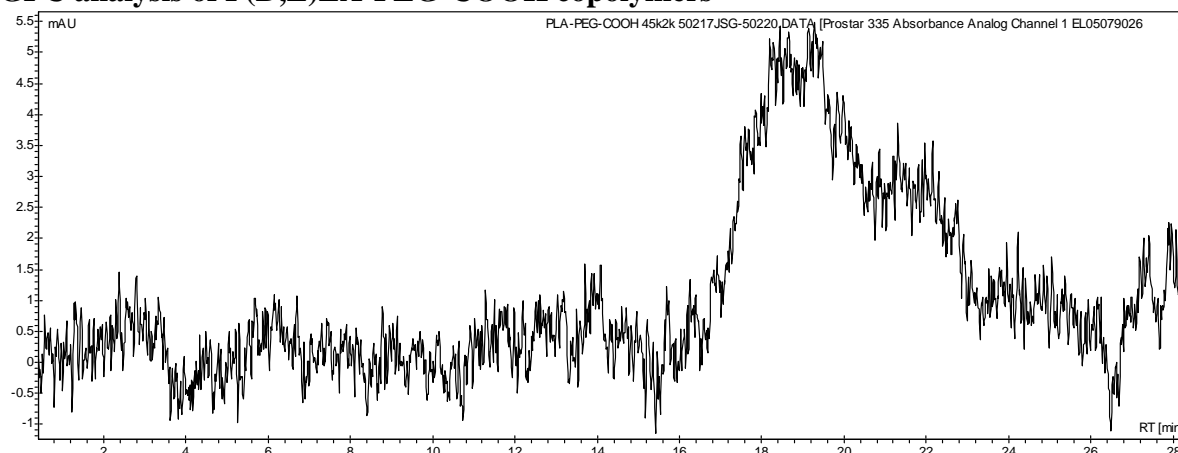


# No. AI106 Certificate of Analysis

Product Name: Poly(D,L-lactide)-*b*-Poly(ethylene glycol)-Carboxylic acid endcap  
(M<sub>w</sub> ~45,000-2,000 Da) (Lot#: 50217JSG)



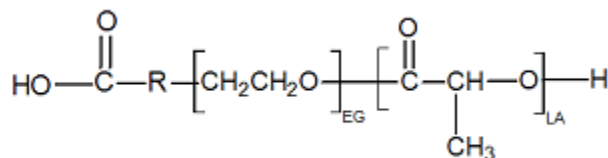
## • GPC analysis of P(D,L)LA-PEG-COOH copolymers



Polymer	M <sub>n</sub> (from GPC)	M <sub>w</sub> (from GPC)	PDI
P(D,L)LA-PEG-COOH	20,179	56,377	2.79
HO-PEG-COOH*	Average M <sub>n</sub> by GFC – 2,100 Da*		

\*-data provided by MFG

## • Structure of P(D,L)LA-PEG-COOH copolymers



Material provided for research use only. Not for human use.