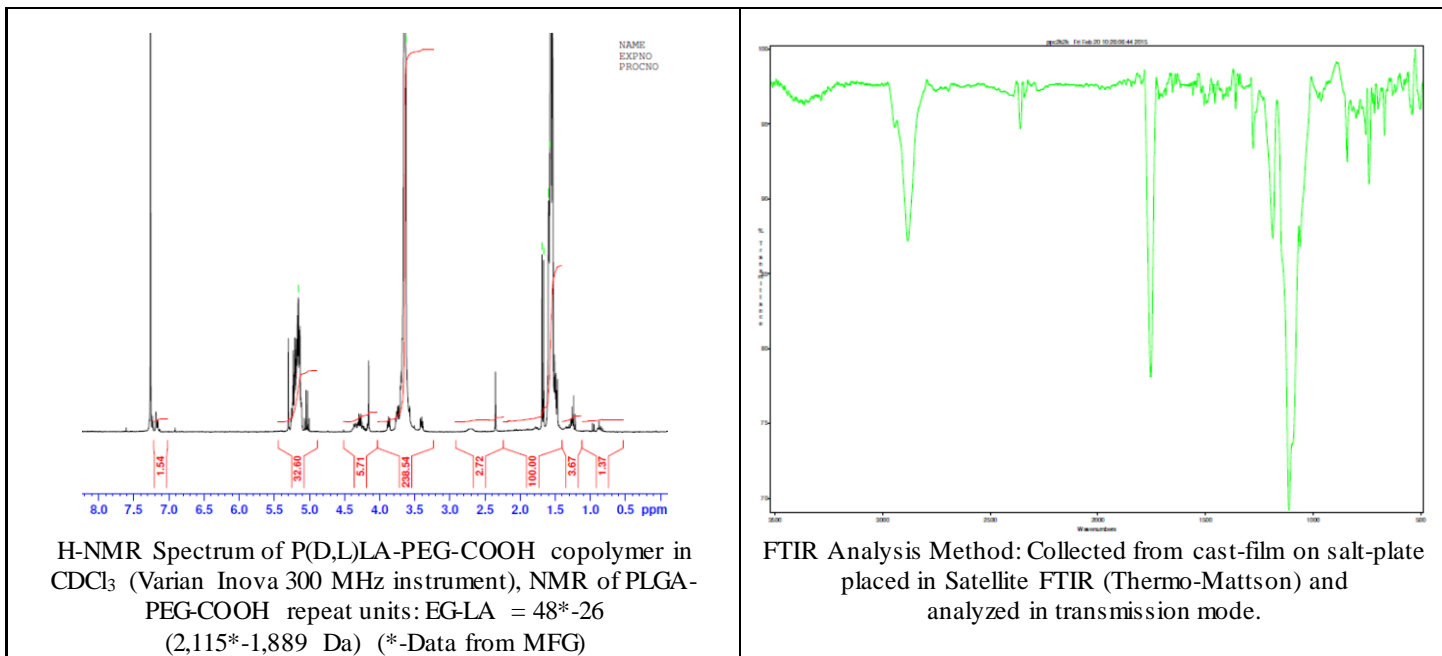


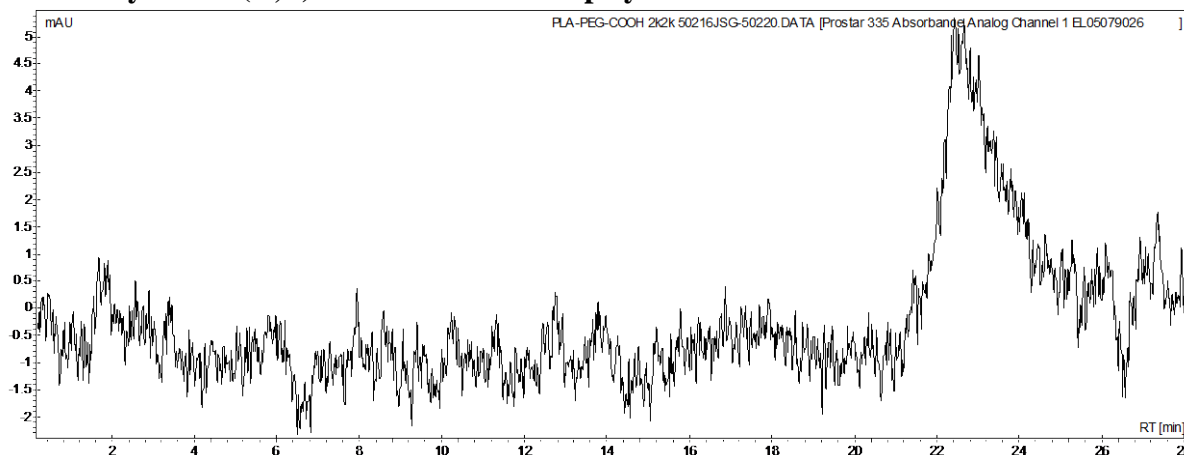
No. A105

Certificate of Analysis

Product Name: Poly(D,L-lactide)-*b*-Poly(ethylene glycol)-Carboxylic acid endcap
($M_w \sim 2,000$ - $2,000$ Da) (Lot#: 50216JSG)



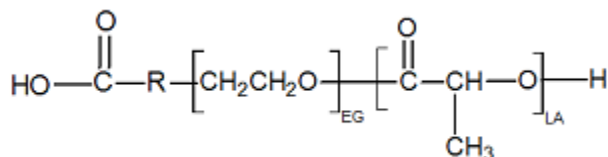
- **GPC analysis of P(D,L)LA-PEG-COOH copolymers**



Polymer	M _n (from GPC)	M _w (from GPC)	PDI
P(D,L)LA-PEG-COOH	2880	4028	1.40
HO-PEG-COOH*	Average M _n by GFC – 2,100 Da*		

*-data provided by MFG

- **Structure of P(D,L)LA-PEG-COOH copolymers**



Material provided for research use only. Not for human use.