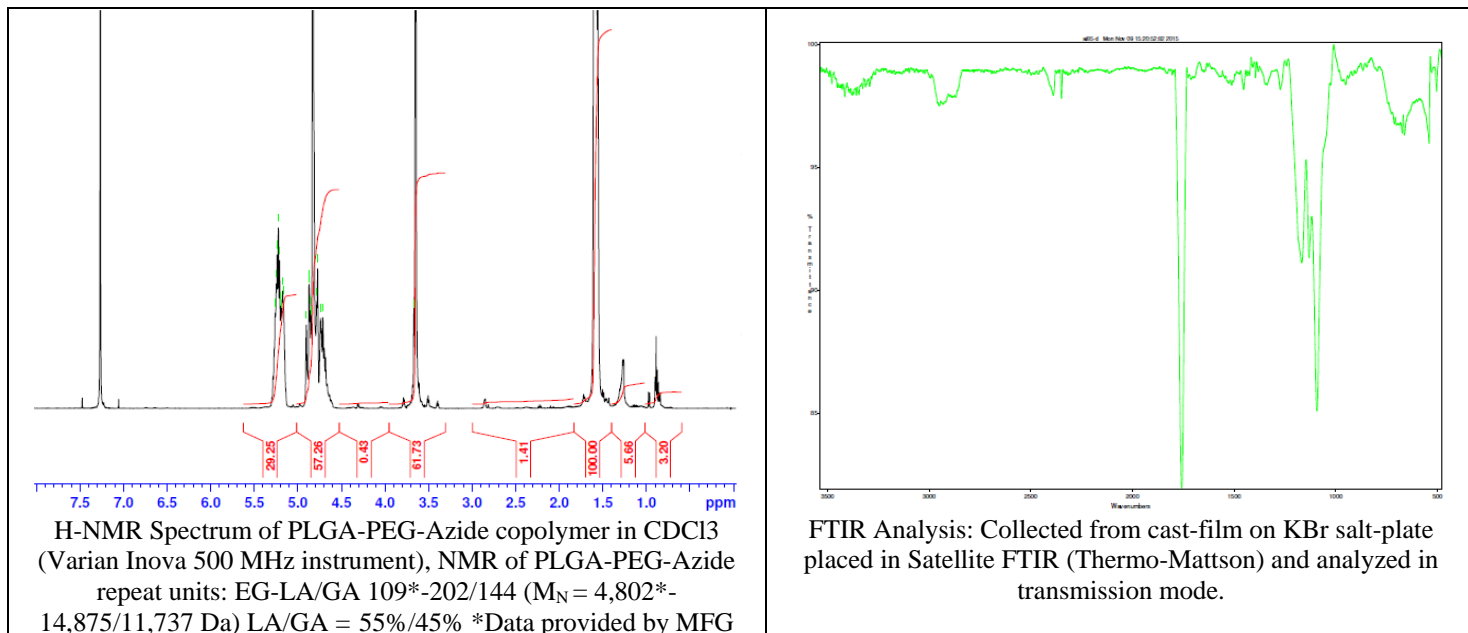


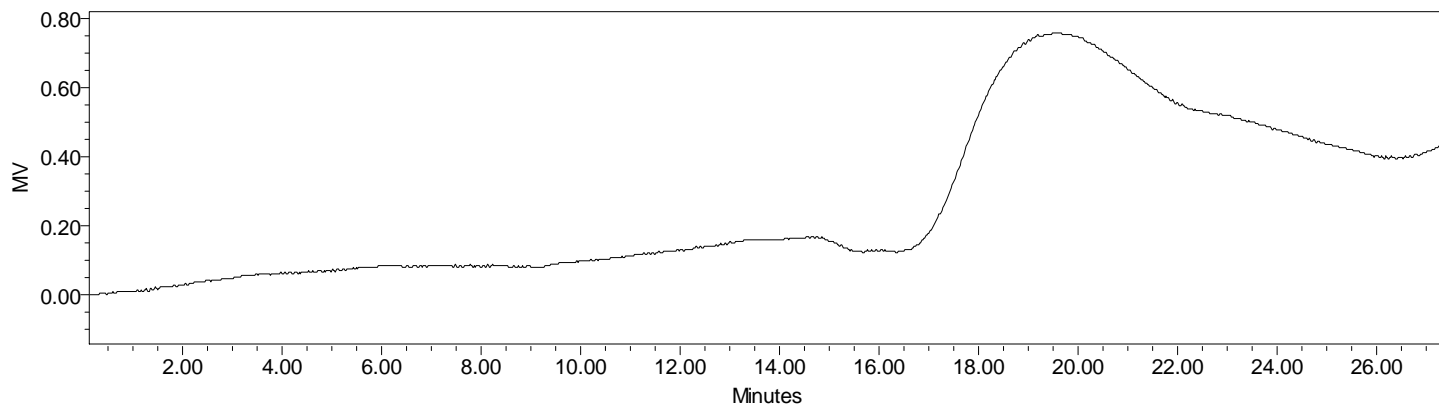
# No. AI085

# Certificate of Analysis

Product Name: Poly(lactide-co-glycolide)-b-Poly(ethylene glycol)-Azide copolymer ( $M_w \sim 15,000:5,000$  Da) (Lot #51020JSG-D)



- **GPC analysis of PLGA-PEG-Azide copolymers**

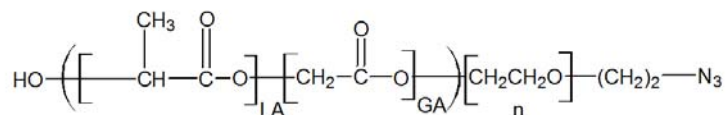


Analysis Method: Waters Breeze 2 system with 1 ml/min DCM flow across three Phenogel 5um columns (Phenomenex). Detection via refractive index, calibrated against polystyrene standards.

Polymer	Mn (from GPC)	Mw (from GPC)	PDI
PLGA-PEG-Azide	12,412	34,116	2.75
PEG-Precursor	$M_p - 4790$ Da*		

\*Data provided by MFG

- **Structure of PLGA-PEG-Azide copolymers**



Material provided for research use only. Not for human use.