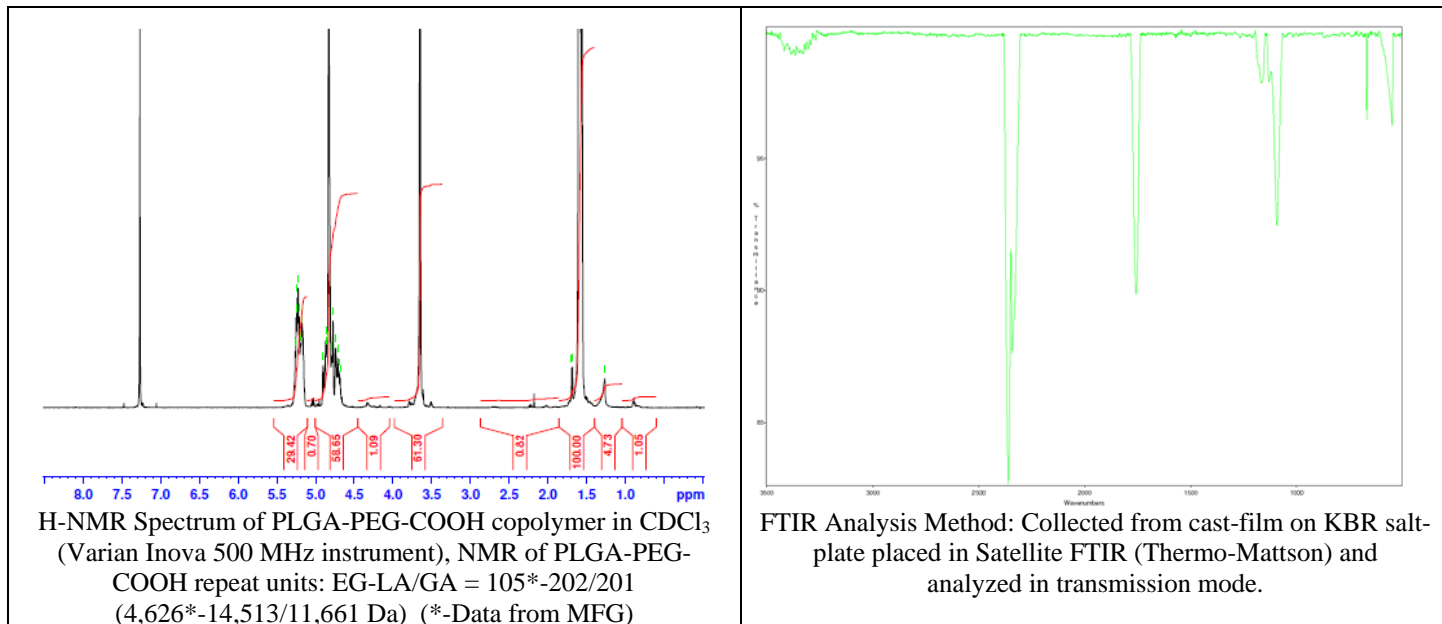
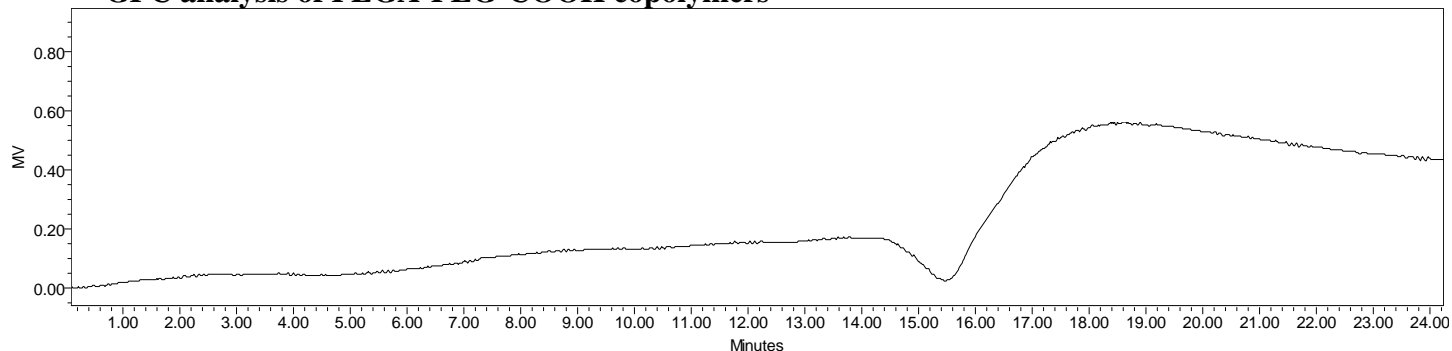


No. AI078 Certificate of Analysis

Product Name: Poly(lactide-co-glycolide)-*b*-Poly(ethylene glycol)-carboxylic acid endcap
($M_w \sim 20,000$ - $5,000$ Da, 50:50 LA:GA) (Lot#: 60217FAJ-B)



- GPC analysis of PLGA-PEG-COOH copolymers**



Analysis Method: Waters Breeze 2 system with 1 ml/min DCM flow across two Phenogel 5 μ m columns and one PLgel Resipore column (Agilent). Detection via refractive index, calibrated against polystyrene standards.

| Polymer | M_n (from GPC) | M_w (from GPC) | PDI |
|---------------|----------------------------------|------------------|------|
| PLGA-PEG-COOH | 9,389 | 27,772 | 2.96 |
| HO-PEG-COOH* | Average M_n by GFC – 4,600 Da* | | |

*-data provided by MFG

- Structure of PLGA-PEG-COOH copolymers**

