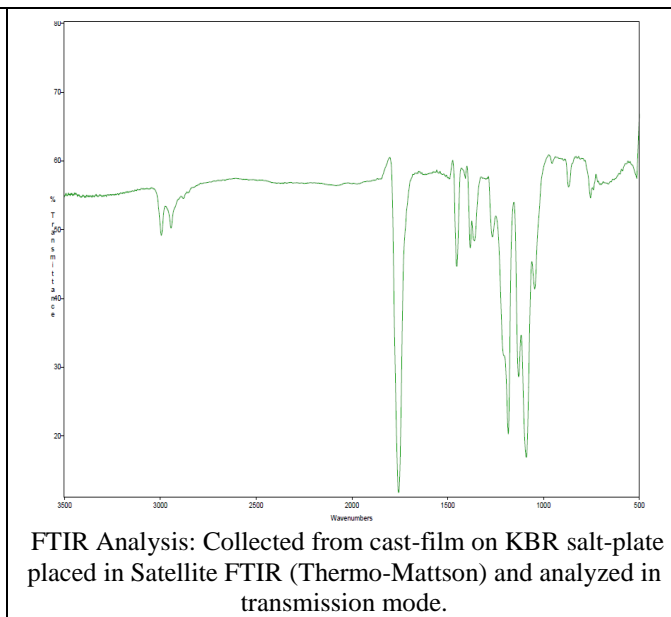
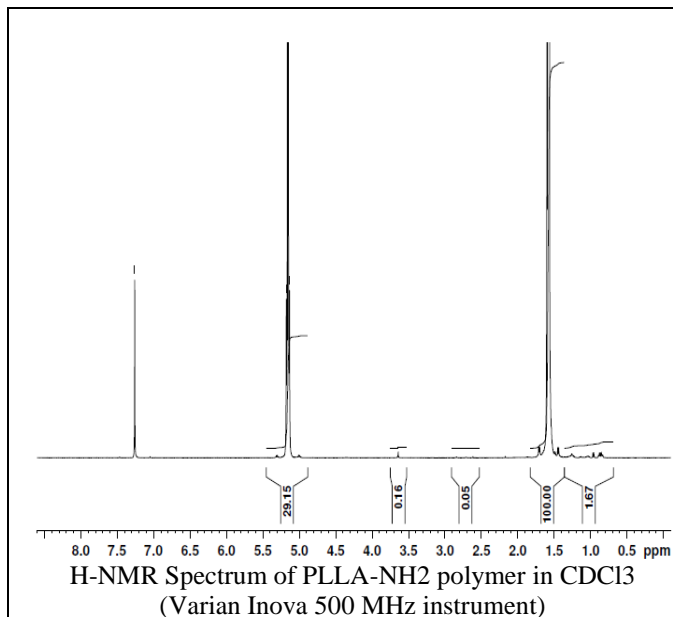


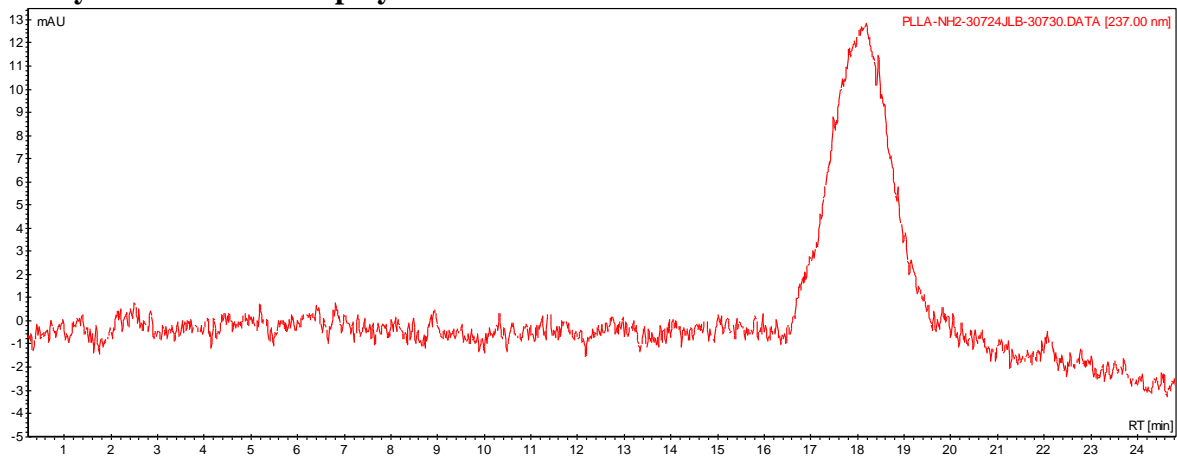
No. AI07

# Certificate of Analysis

Product Name: Poly(L-lactic) dihydrazide endcap (MW ~ 120,000 Da) (Lot#: 30724JLB)



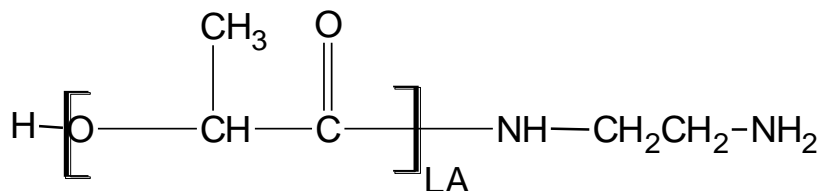
- **GPC analysis of PLLA-NH<sub>2</sub> polymer**



Analysis Method: Varian Prostar system with 1 ml/min DCM flow across two Phenogel 5u columns and one Resipore column (Agilent). Detection via UV/Vis, calibrated against polystyrene standards

Polymer	Mn (from GPC)	Mw (from GPC)	PDI
PLLA-NH <sub>2</sub>	76,869	128,082	1.67

- **Structure of PLLA-NH<sub>2</sub> polymer**



Material provided for research use only. Not for human use.