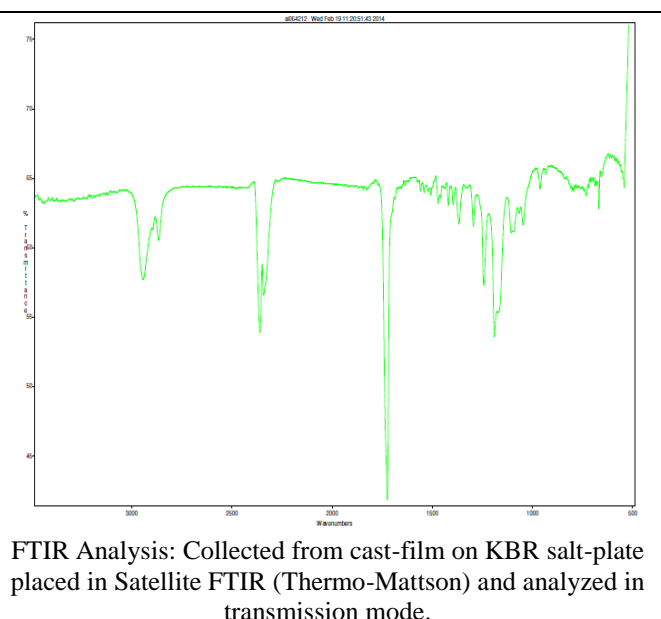
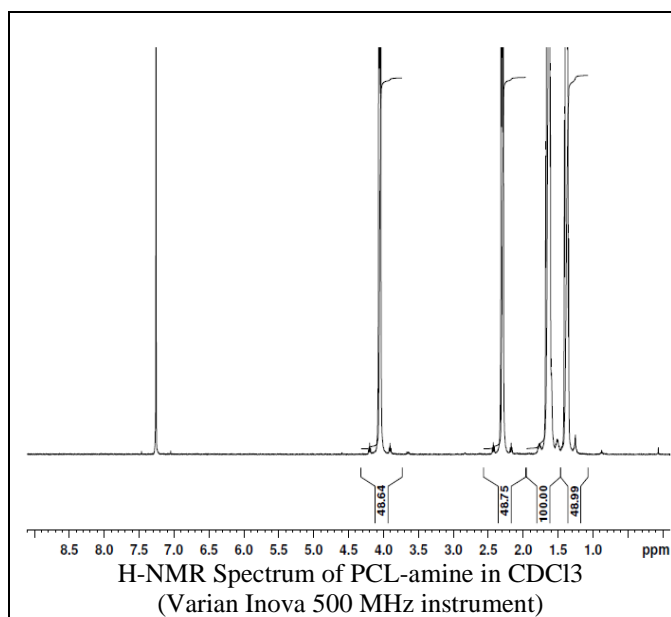
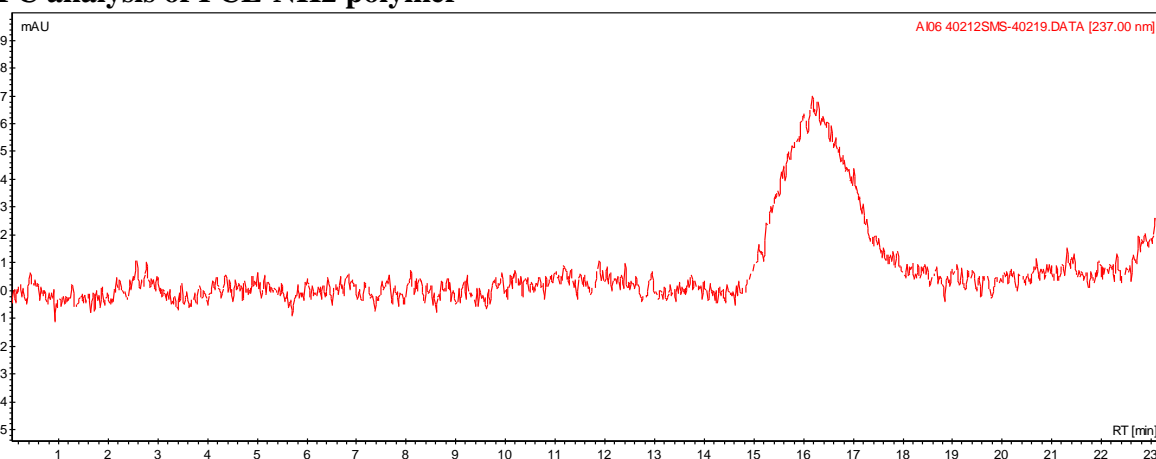


No. AI06 Certificate of Analysis

Product Name: Poly(caprolactone)-amine endcap ~ 150,000 Da (Lot#: 40212SMS)



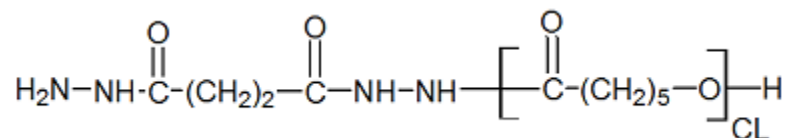
- GPC analysis of PCL-NH₂ polymer



Analysis Method: Varian Prostar system with 1 ml/min DCM flow across two phenogel 5u columns and one Resipore column (Agilent). Detection via UV/Vis, calibrated against polystyrene standards.

Polymer	Mn (from GPC)	Mw (from GPC)	PDI
PCL-amine	106,491	171,129	1.61

- Structure of PCL-NH₂ polymer



Material provided for research use only. Not for human use.