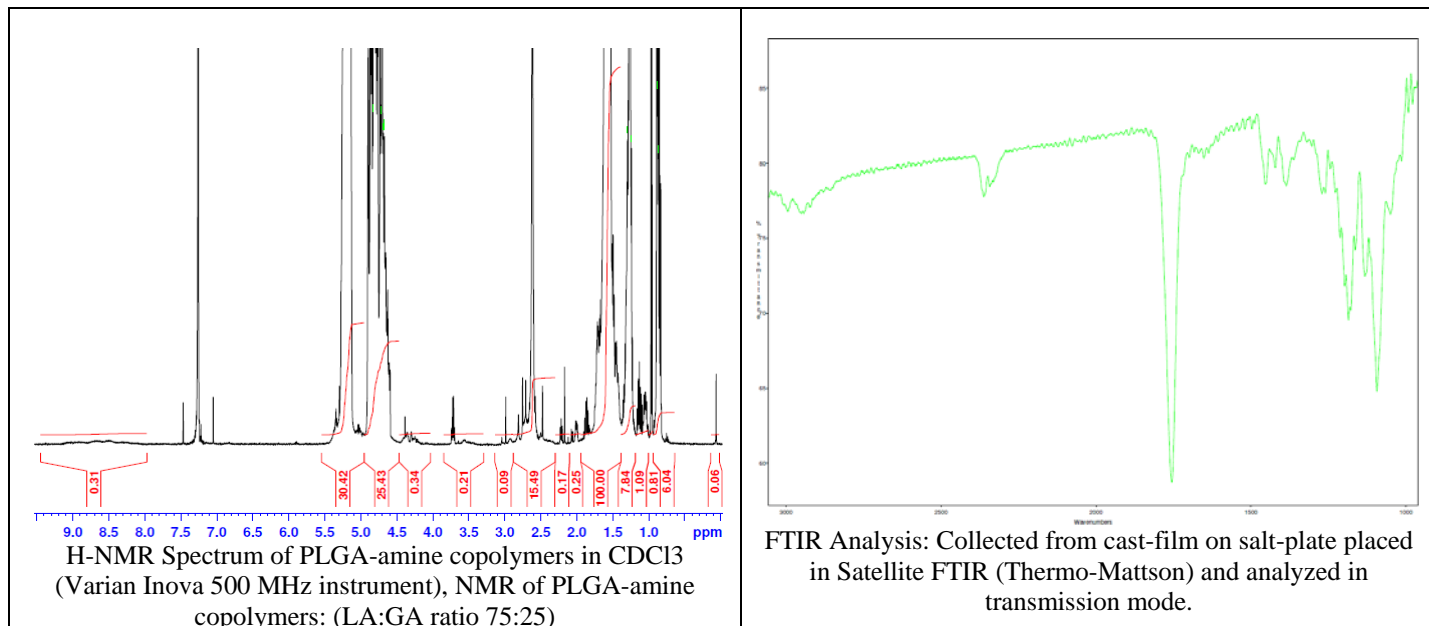


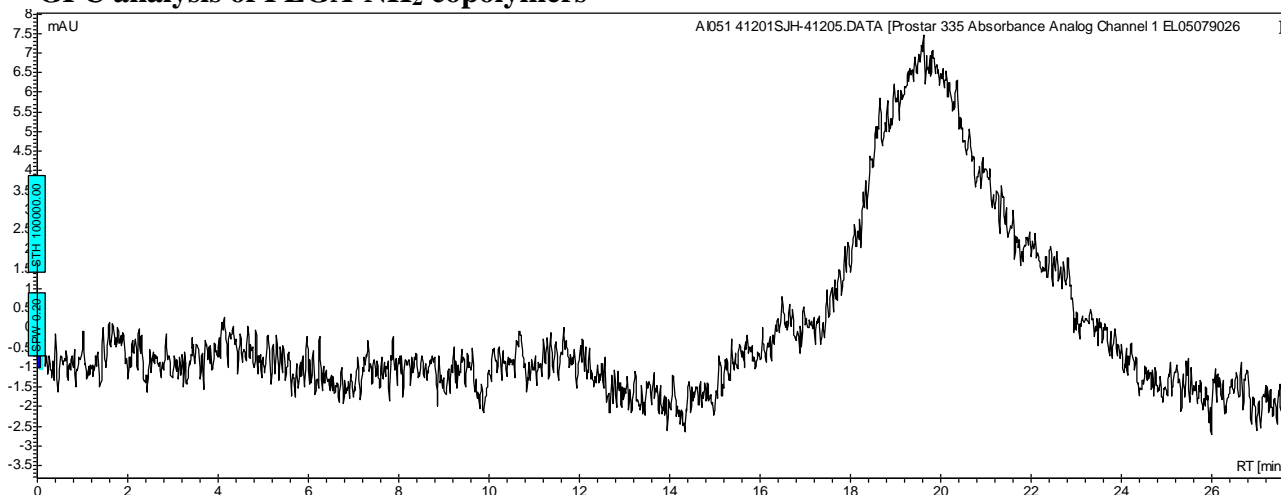
No. AI051

Certificate of Analysis

Product Name: Poly(lactide-co-glycolide(75:25)) amine endcap (Mn: 10,000-15,000Da) (Lot#: 41201SJH)



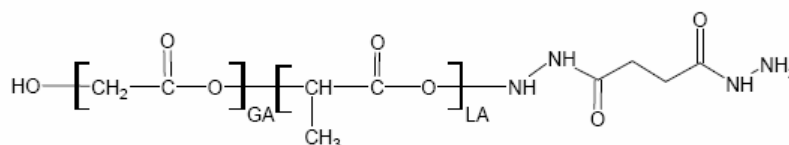
- **GPC analysis of PLGA-NH₂ copolymers**



Analysis Method: Varian Prostar system with 1 ml/min DCM flow across two Phenogel 5µm columns and one PLgel Resipore columns (Agilent). Detection via UV/Vis, calibrated against polystyrene standards.

Polymer	Mn (from GPC)	Mw (from GPC)	PDI
PLGA-NH ₂	11,544	32,457	2.81

- **Structure of PLGA-NH₂ copolymers**



Material provided for research use only. Not for human use.