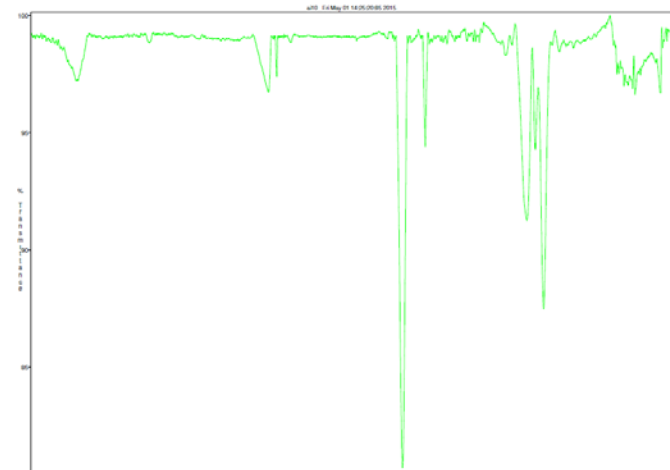
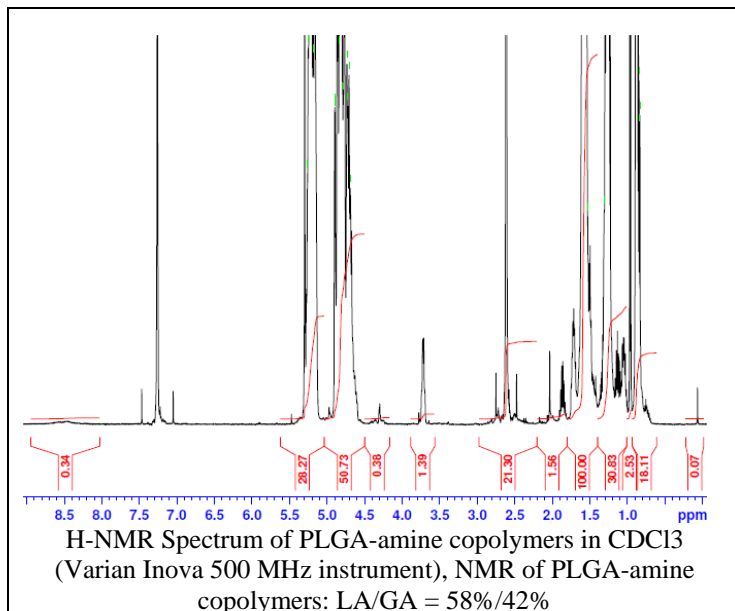


No. AI010

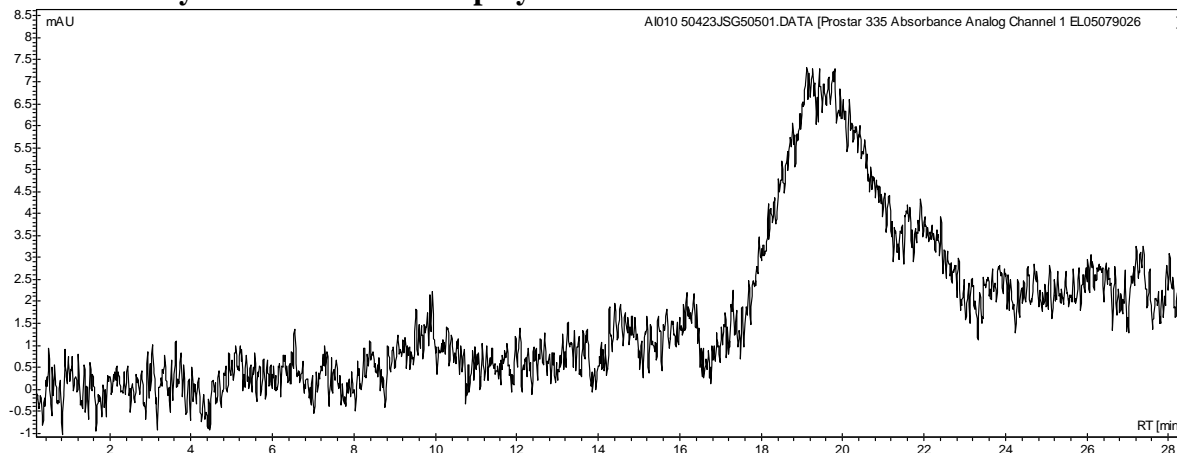
Certificate of Analysis

Product Name: Poly(lactide-co-glycolide) amine endcap (Mw 20,000-30,000Da) (Lot#: 50423JSG)



FTIR Analysis: Collected from cast-film on salt-plate placed in Satellite FTIR (Thermo-Mattson) and analyzed in transmission mode.

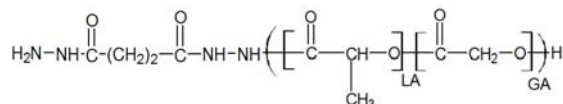
• GPC analysis of PLGA-NH₂ copolymers



Analysis Method: Varian Prostar system with 1 ml/min DCM flow across two Phenogel 5 μ m columns and one Resipore column (Agilent). Detection via UV/Vis, calibrated against polystyrene standards.

Polymer	Mn (from GPC)	Mw (from GPC)	PDI
PLGA-NH ₂	11330	30501	2.13

• Structure of PLGA-NH₂ copolymers



Material provided for research use only. Not for human use.